



syngenta

balancing yield with stiff straw

In the new era of farming – with higher grain prices and more cereals being planted – output with dependability is key.

Not only do you want a wheat variety that yields well – to make the most of grain price – but one that stands well – so that, with more wheat to combine, you can avoid costly harvest delays.

That's in addition to top yields as a second wheat – given the increase in wheat planted after wheat, barley or set-aside – plus no weaknesses to major diseases.

All these are where new winter wheat **DUXFORD** comes into its own.



A high-yielding, NABIM group 4 hard feed wheat, not only does it offer excellent yields across the UK, but combines these with outstanding resistance to lodging – plus an unbeaten second and more treated yield on the HGCA Recommended List 2008/09.

All this, plus it offers other beneficial traits.

we call it 'the DUXFORD effect'
simply the best combination of yield and straw stiffness



- Very high UK treated wheat yield ~ 2% higher than Alchemy and 3% higher than Gladiator*
- Highest yielding second wheat on the HGCA Recommended List 2008/09*
- Very stiff straw and excellent resistance to lodging with PGR (9)*
- Excellent yield potential across all regions and soil types
- Good all-round disease resistance profile – no rating below 5*
- Recommended drilling date mid-September onwards

Full husbandry guidelines available at www.newfarmcrops.co.uk

*Data from the HGCA Recommended Lists database, full data at www.hgca.com

syngenta®

Syngenta Seeds Ltd
CPC4, Capital Park, Fulbourn, Cambridge CB21 5XE United Kingdom
Tel: +44 (0) 1223 883400 Fax: +44 (0) 1223 882238
Email: nfc.enquiries@syngenta.com Website: www.newfarmcrops.co.uk
©Syngenta AG June 2008

Disclaimer

The information given in this document is for general guidance only. Whilst every care has been taken to ensure it is accurate, it is, out of necessity, of a general nature and variation in growing environment or climate can render it inaccurate. Syngenta Seeds Ltd cannot accept any liability arising out of or in connection with the use of this information. Crop protection products should be used in conjunction with manufacturers' recommendations. Syngenta Crop Protection UK Limited, Syngenta Seeds Ltd, and their affiliates will use this information to provide the services requested by you and to communicate product information, services and offers that we believe are relevant to your business. We use service partners to send these communications on our behalf. **WE DO NOT, HOWEVER, PASS INFORMATION TO THIRD PARTIES FOR DIRECT MARKETING PURPOSES.** If you do not want to receive these communications from us, write to the database manager at Syngenta.

a **new**
high-yielding
feed wheat...

...for a **new**
era in farming

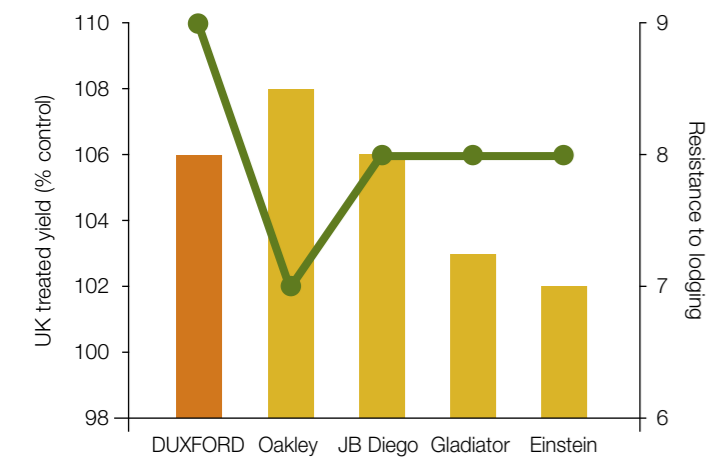




high output

There's more to output than yield alone. With more cereals to harvest, it is dependable yield – from crops that remain standing – which is key. This is where DUXFORD shines through.

DUXFORD – UK treated yield and lodging resistance

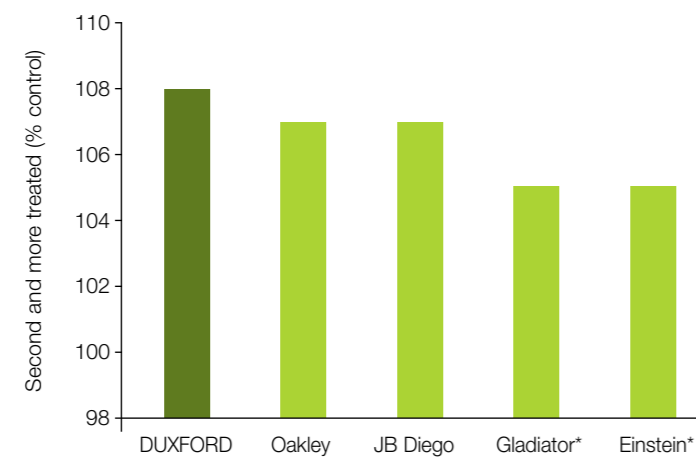


Legend:
■ UK treated yield (% control, 10.1 t/ha)
● Resistance to lodging with PGR
 Data from the HGCA Recommended Lists database, full data at www.hgca.com

● UK treated yield of 106% on the HGCA Recommended List 2008/09 for winter wheat – equivalent to 10.7 t/ha

- Consistent treated yield in different parts of the UK on the HGCA Recommended List:
 - East – 106%
 - West – 106%
 - North – 105% (limited data)
- These combined with a maximum 9 rating for resistance to lodging with PGR

DUXFORD – second wheat and more treated yield



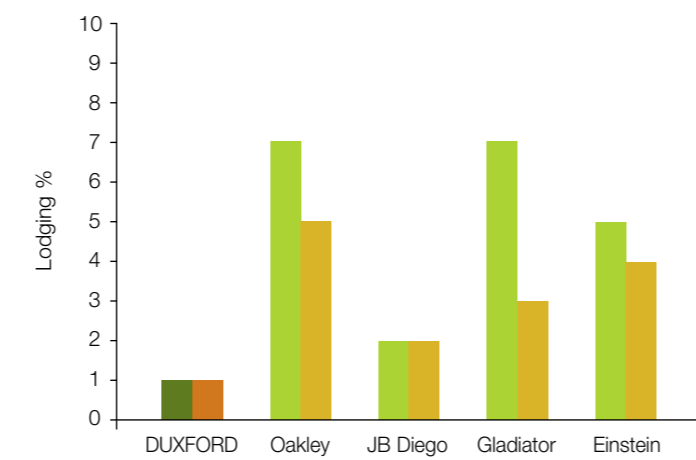
Data from the HGCA Recommended Lists database, full data at www.hgca.com
 * Current popular second wheat varieties

● The highest second and more winter wheat treated yield on the HGCA Recommended List 2008/09 – at 108%, this is equivalent to over 10 t/ha

very stiff straw

As well as high yields, DUXFORD offers outstanding resistance to lodging – the key to a smooth and reliable harvest.

DUXFORD – less lodging

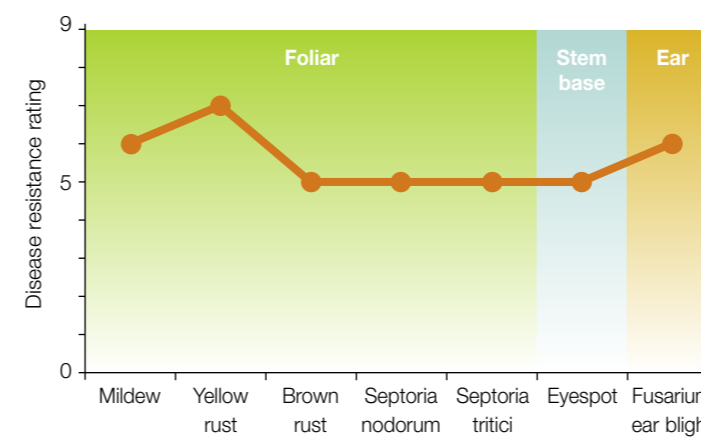


Legend:
■ Lodging % without PGR
■ Lodging % with PGR
 Data from the HGCA Recommended Lists database, full data at www.hgca.com

all-round disease resistance

DUXFORD offers the reassurance of a balanced resistance profile to all the main fungal diseases.

DUXFORD – disease resistance profile



Data from the HGCA Recommended Lists database, full data at www.hgca.com
 On 1-9 scales, high figure indicates that a variety shows the character to a high degree
 Limited data for DUXFORD for *Septoria nodorum*, eyespot and *Fusarium* ear blight on HGCA Recommended List 2008/09

other beneficial traits

gristing potential



Originally evaluated as a group 2 variety, DUXFORD has produced positive results in milling tests when grown for quality – potentially giving access to additional markets as well as feed. As with any variety, consult your end market before growing DUXFORD as a quality wheat.

spreading drilling date options

Suitable for drilling from mid-September onwards, DUXFORD makes an ideal option as part of a black-grass management strategy – where growers are looking to delay drilling without suffering a major penalty in yield.

It also helps spread workloads during drilling peaks and makes an ideal option for planting after root crops.

Later drilling can help overcome the black-grass germination peak

